



SAN DIEGO STATE
UNIVERSITY

ENROLLMENT
MANAGEMENT UPDATE

*President's Enrollment Management Advisory Committee
October 2017*



TABLE OF CONTENTS

2017/18 Enrollment	2
Total Applications	5
Undergraduate Applications	7
Undergraduate Diversity	13
First-Time Freshmen Enrollment	15
New Undergraduate Transfer Enrollment	18
First-Time Freshmen Continuation and Graduation Rates	20
New Undergraduate Transfer Continuation and Graduation Rates	29
Graduate Enrollment	35
State and County Comparisons	38

Prepared by Analytic Studies & Institutional Research (ASIR) for the University Senate Academic Policy and Planning Committee, University Senate Undergraduate Council and President's Enrollment Advisory Committee

2017/18
ENROLLMENT



2017/18 Full-Time Equivalent Student (FTES) and Headcount Summary

2017/18 Target, Projected & Actual Full-Time Equivalent Student (FTES) & Headcount

FULL-TIME EQUIVALENT STUDENTS (FTES)	Resident FTES Target			Summer & Fall Actual, Spring Projected FTES [2]		
	Original Target	Revised Target	Change in Target	Resident	Non-Resident	Total, Resident & Non-Resident
Summer 2017	2,186	2,194	8	2,442	476	2,918
Fall 2017	27,378	27,478	100	27,558	4,254	31,812
Spring 2018	25,044	25,136	92	25,099	3,831	28,930
College Year annualized FTES target	27,304	27,404	100	27,550	4,281	31,830
CO Budgeted CY FTES	27,304	27,404	100			

HEADCOUNT	Resident Headcount Target			Summer & Fall Actual, Spring Projected Headcount [2]		
	Original Target	Revised Target	Change in Target	Resident	Non-Resident	Total, Resident & Non-Resident
Summer 2017	5,713	5,713	0	6,190	1,233	7,423
Fall 2017	30,172	30,274	102	30,271	4,557	34,828
Spring 2018	27,798	27,889	92	27,874	4,144	32,018
College Year annualized headcount	31,841	31,938	97	32,167	4,967	37,134

Notes:

[1] An undergraduate student enrolled in 15 units of coursework = 1 Full-Time Equivalent Student (FTES)

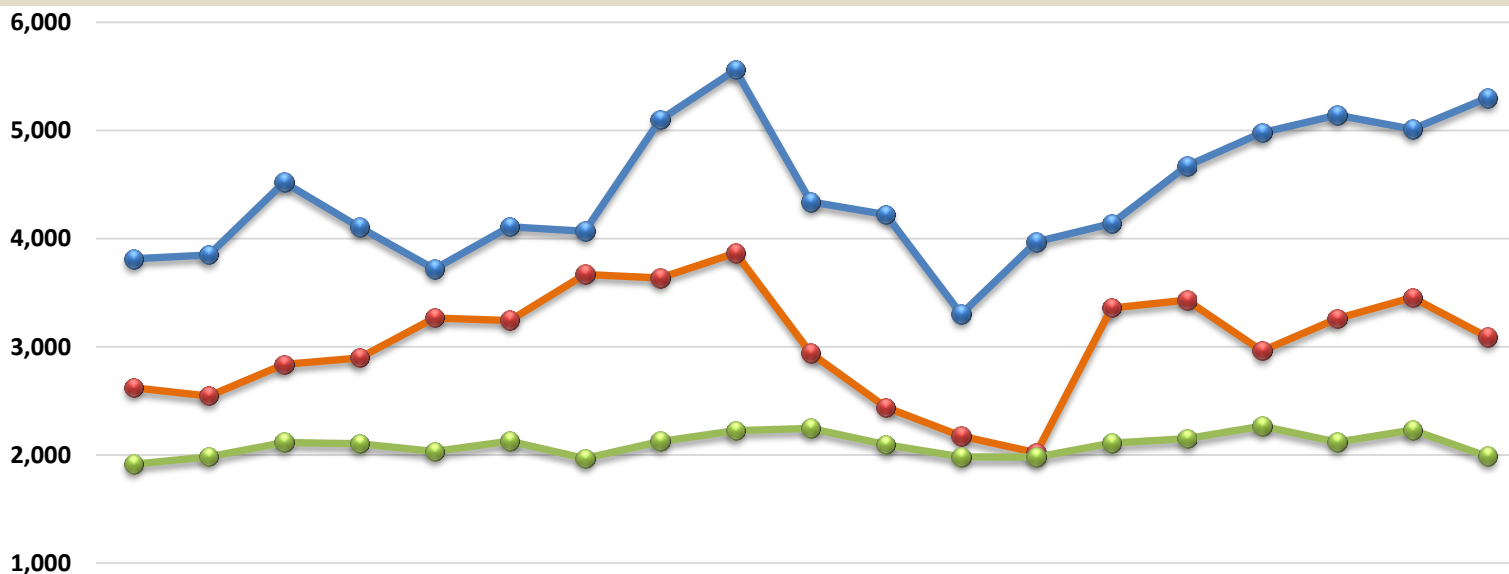
A graduate student enrolled in 12 units of coursework = 1 Full-Time Equivalent Student (FTES)

[2] Actual figures shown for Summer 17 and Fall 17, projected figures shown for Spring 18.



NEW STUDENT ENROLLMENT

San Diego Campus



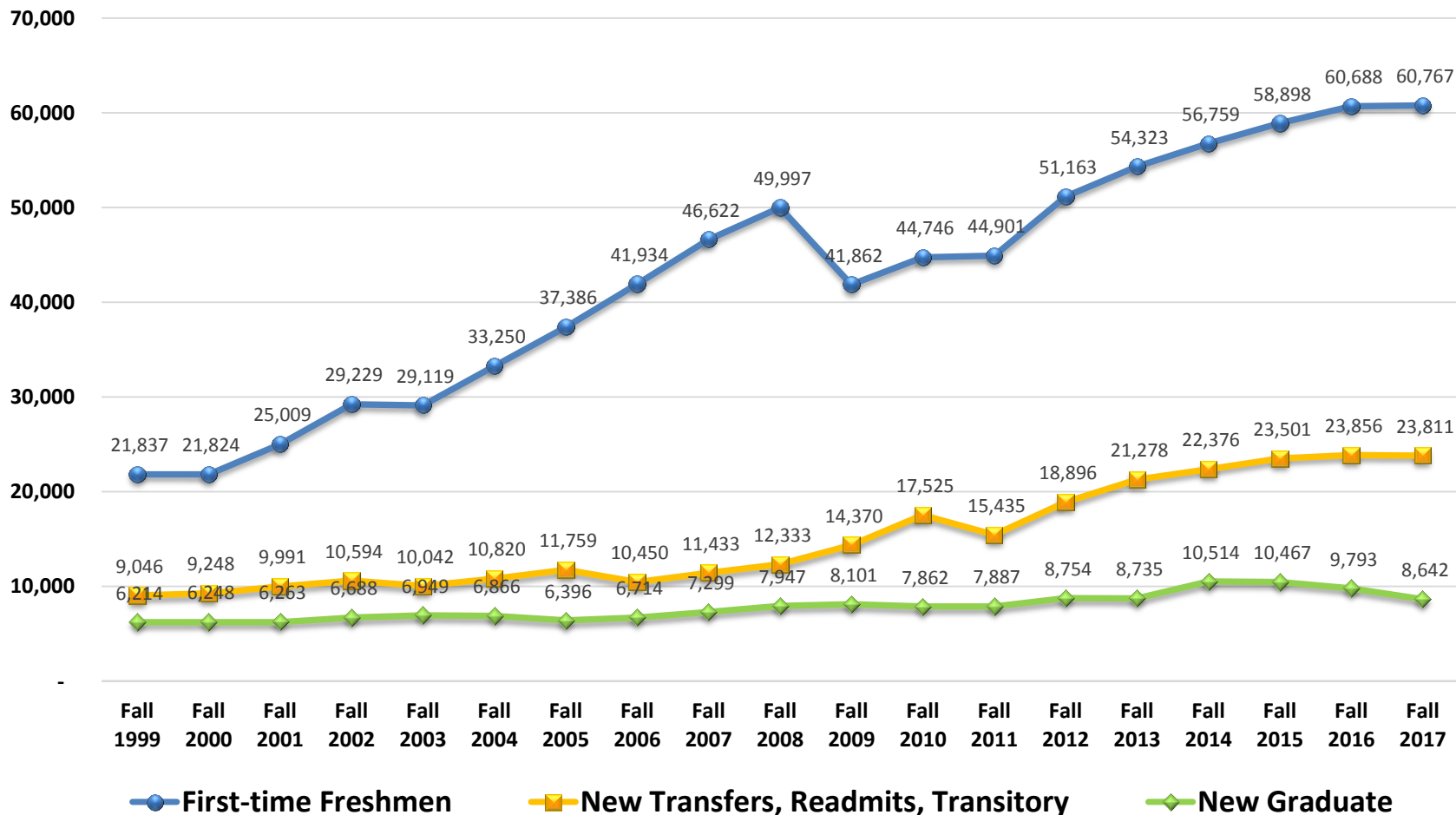
	Fall 1999	Fall 2000	Fall 2001	Fall 2002	Fall 2003	Fall 2004	Fall 2005	Fall 2006	Fall 2007	Fall 2008	Fall 2009	Fall 2010	Fall 2011	Fall 2012	Fall 2013	Fall 2014	Fall 2015	Fall 2016	Fall 2017
● New UG - FTF	3,813	3,850	4,521	4,107	3,719	4,110	4,069	5,098	5,559	4,339	4,223	3,302	3,970	4,139	4,671	4,978	5,142	5,011	5,301
● New UG - Trnsfr	2,622	2,546	2,837	2,898	3,267	3,244	3,670	3,636	3,866	2,940	2,440	2,174	2,021	3,359	3,431	2,963	3,262	3,455	3,090
● New Graduate	1,915	1,984	2,117	2,104	2,033	2,127	1,967	2,125	2,224	2,246	2,095	1,982	1,981	2,110	2,150	2,268	2,120	2,230	1,986

TOTAL APPLICATIONS



TOTAL APPLICATIONS BY NEW STUDENT TYPE

San Diego Campus

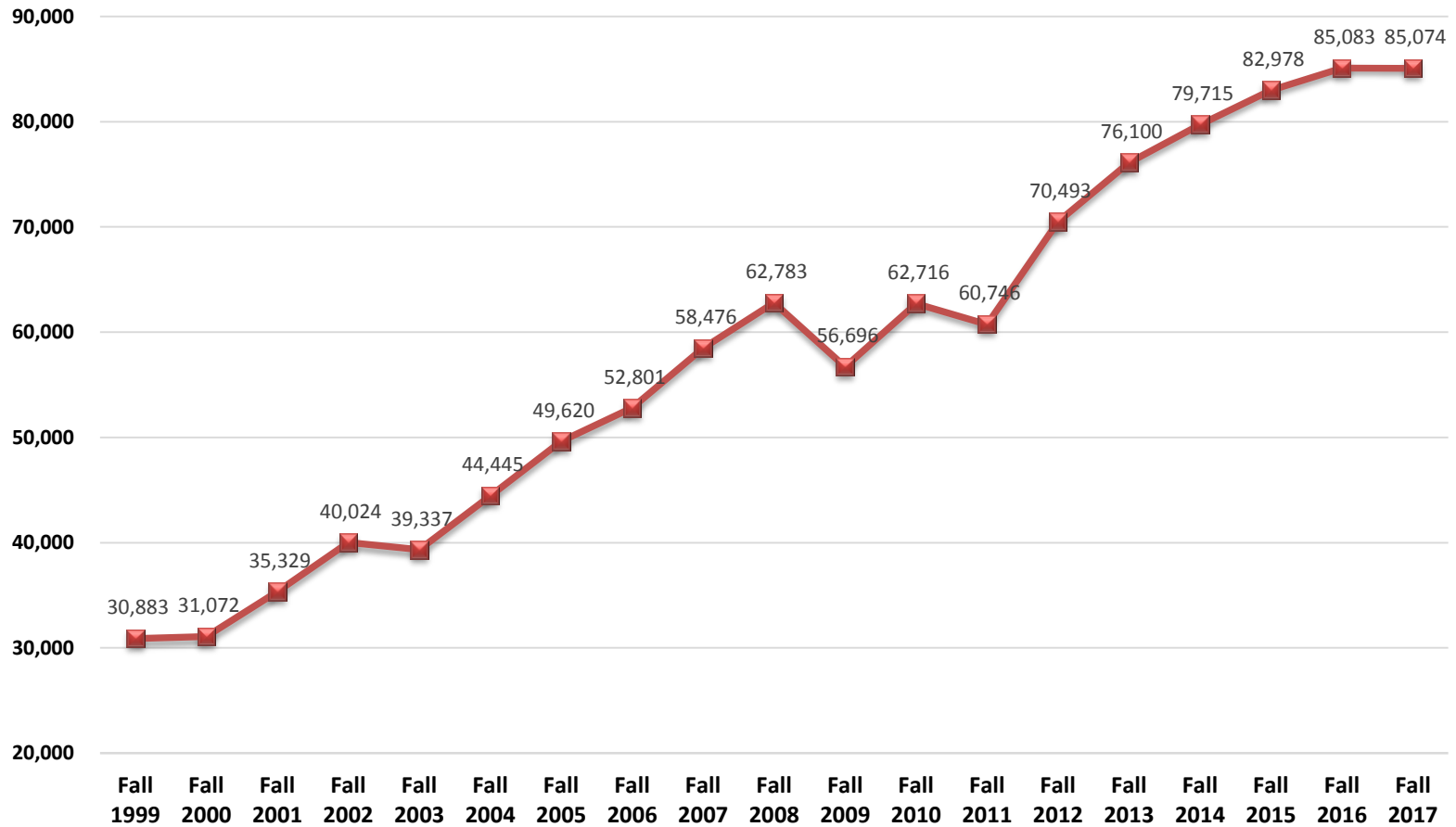


UNDERGRADUATE APPLICATIONS



TOTAL UNDERGRADUATE APPLICATIONS

San Diego and Imperial Valley Campuses





RESIDENT FIRST-TIME FRESHMEN

Applications, CSU-Eligible Applications, Admits & Enrollees by Ethnicity & Admission Area *San Diego Campus*

Row Labels	Fall 2017									
	Local					Non-Local Area				
	Apps	CSU-Elig Apps	Admit	Enrl	% Show Rate	Apps	CSU-Elig Apps	Admit	Enrl	% Show Rate
Students of Color										
Native American	18	16	13	4	30.8 %	80	58	47	18	38.3 %
African American	320	263	127	53	41.7 %	2,653	1,453	546	129	23.6 %
Hispanic, Latino	3,448	2,993	1,648	739	44.8 %	18,514	13,443	3,499	581	16.6 %
Asian	561	539	373	132	35.4 %	6,174	5,319	2,268	200	8.8 %
Pacific Islander, Native Hawaiian	20	16	8	5	62.5 %	140	103	31	6	19.4 %
Filipino	579	545	365	158	43.3 %	1,906	1,607	511	120	23.5 %
Multiple Ethnicities	445	421	259	118	45.6 %	3209	2646	1050	224	21.3 %
Students of Color Total	5,391	4,793	2,793	1,209	43.3 %	32,676	24,629	7,952	1,278	16.1 %
All Others										
White	1,292	1,233	795	336	42.3 %	12,562	11,217	4,933	1,139	23.1 %
Other, Not Stated	168	149	74	35	47.3 %	1,526	1,272	508	119	23.4 %
International	176	156	75	26	34.7 %	1013	674	181	8	4.4 %
All Others Total	1,636	1,538	944	397	42.1 %	15,101	13,163	5,622	1,266	22.5 %
Grand Total	7,027	6,331	3,737	1,606	43.0 %	47,777	37,792	13,574	2,544	18.7 %



RESIDENT NEW TRANSFER & READMITS

Applications, CSU-Eligible Applications, Admits & Enrollees by Ethnicity & Admission Area *San Diego Campus*

Fall 2017	Local					Non-Local Area				
	Apps	CSU-Elig Apps	Admit	Enrl	% Show Rate	Apps	CSU-Elig Apps	Admit	Enrl	% Show Rate
Students of Color										
Native American	13	10	5	4	80.0 %	43	37	7	5	71.4 %
African American	282	253	103	76	73.8 %	727	621	47	26	55.3 %
Hispanic, Latino	2,777	2,580	1,263	1,005	79.6 %	6,041	5,492	464	218	47.0 %
Asian	397	365	180	136	75.6 %	1,847	1,656	147	46	31.3 %
Pacific Islander, Native Hawaiian	23	21	10	8	80.0 %	57	51	4	3	75.0 %
Filipino	409	372	204	169	82.8 %	642	568	57	33	57.9 %
Multiple Ethnicities	321	303	154	116	75.3 %	1019	916	110	60	54.5 %
Students of Color Total	4,222	3,904	1,919	1,514	78.9 %	10,376	9,341	836	391	46.8 %
All Others										
White	1,534	1,424	819	655	80.0 %	4,558	4,085	520	280	53.8 %
Other, Not Stated	351	323	158	124	78.5 %	803	718	95	51	53.7 %
International	109	100	48	38	79.2 %	345	313	32	10	31.3 %
All Others Total	1,994	1,847	1,025	817	79.7 %	5,706	5,116	647	341	52.7 %
Grand Total	6,216	5,751	2,944	2,331	79.2 %	16,082	14,457	1,483	732	49.4 %



NEW STUDENT ACADEMIC INDICATORS BY ENTERING FALL TERM

Average High School GPA and Average Test Scores *San Diego Campus*

First-Time Freshmen

	Fall 2000	Fall 2001	Fall 2002	Fall 2003	Fall 2004	Fall 2005	Fall 2006	Fall 2007	Fall 2008	Fall 2009	Fall 2010	Fall 2011	Fall 2012	Fall 2013	Fall 2014	Fall 2015	Fall 2016	Fall 2017
Enroll	3850	4521	4107	3719	4110	4069	5098	5559	4339	4223	3302	3970	4139	4671	4978	5142	5011	5301
Avg HS GPA	3.37	3.38	3.43	3.51	3.48	3.49	3.45	3.44	3.47	3.47	3.63	3.62	3.61	3.61	3.69	3.69	3.68	3.71
Avg SAT Verbal	512	508	515	524	530	528	514	516	514	511	531	529	533	541	545	548	550	557
Avg SAT Math	533	529	539	555	551	548	535	537	536	528	555	554	555	565	569	570	568	581
Avg SAT	1045	1038	1053	1078	1081	1076	1050	1053	1050	1039	1086	1083	1087	1106	1115	1118	1117	1195
Avg ACT	21.3	21.1	21.5	22.2	22.4	22.3	21.9	22.1	22.4	22.3	23.6	23.6	23.7	24.1	24.4	24.9	25.2	25.3

New Transfers and Readmits

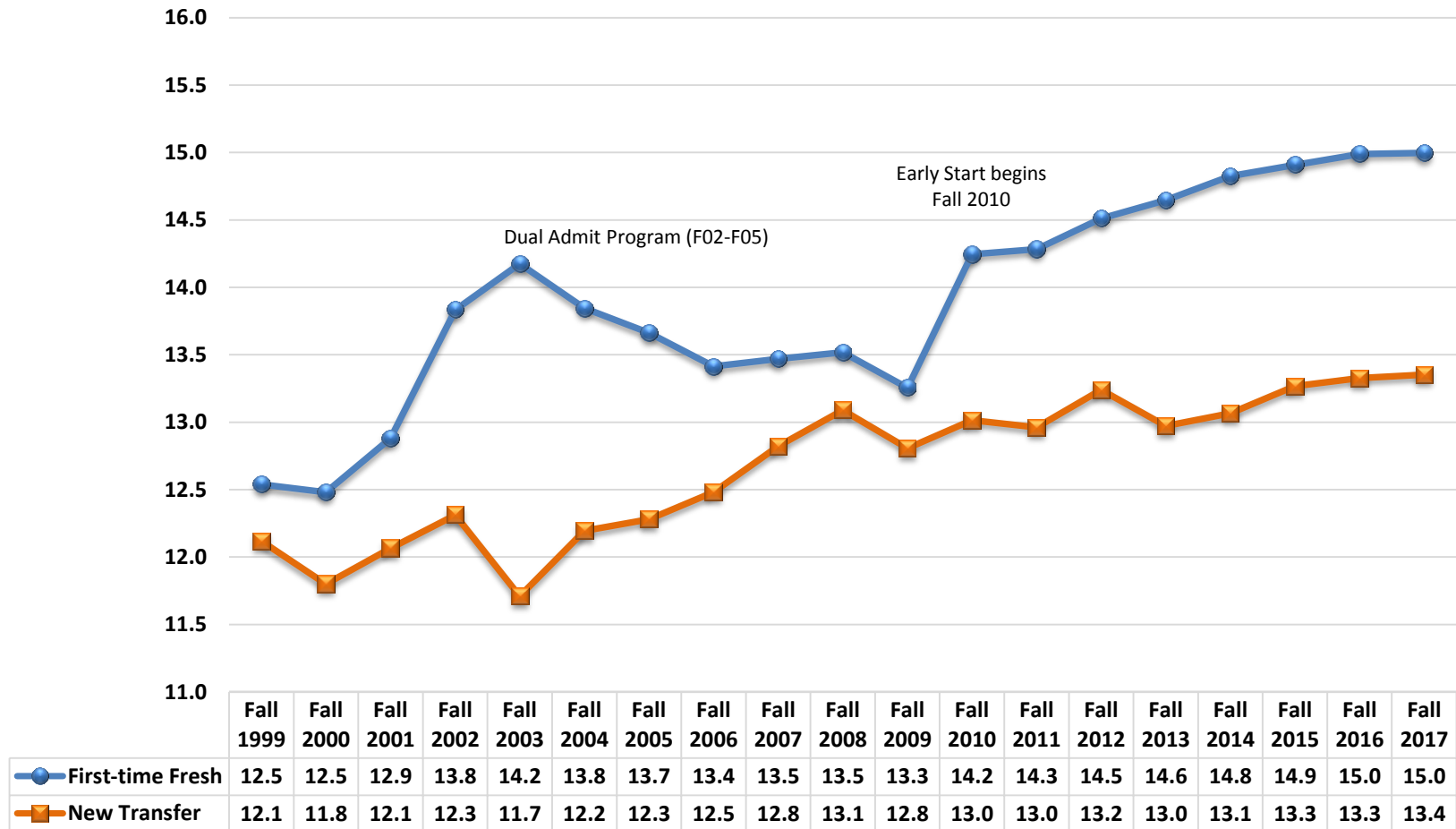
	Fall 2000	Fall 2001	Fall 2002	Fall 2003	Fall 2004	Fall 2005	Fall 2006	Fall 2007	Fall 2008	Fall 2009	Fall 2010	Fall 2011	Fall 2012	Fall 2013	Fall 2014	Fall 2015	Fall 2016	Fall 2017
Enroll	2728	3114	3056	3427	3409	3845	3778	4058	3063	2584	2295	2069	3460	3542	3067	3364	3543	3195
Avg Tran GPA	3.03	3.03	3.10	3.13	3.12	3.12	3.09	3.11	3.19	3.22	3.20	3.24	3.20	3.19	3.21	3.24	3.25	3.30

[1] Revised in 2014 to report academic indicators derived from ERSS.



NEW UNDERGRADUATE AVERAGE UNIT LOAD

San Diego Campus



SAN DIEGO CAMPUS UNDERGRADUATE DIVERSITY



TOTAL UNDERGRADUATE ENROLLMENT & FTES

By Ethnicity

San Diego Campus

	Fall 2016				Fall 2017			
	Enroll	Enrl %	FTES	FTES %	Enroll	Enrl %	FTES	FTES %
Students of Color								
Native American	89	0.3 %	83.6	0.3 %	106	0.4 %	99.5	0.4 %
African American	1,202	4.1 %	1,104.4	4.1 %	1,193	4.1 %	1,094.7	4.0 %
Hispanic, Latino	8,504	29.3 %	7,766.4	28.7 %	8,562	29.1 %	7,851.3	28.6 %
Asian	2,173	7.5 %	2,029.8	7.5 %	2,164	7.4 %	2,032.4	7.4 %
Pacific Islander, Native Hawaiian	73	0.3 %	67.1	0.2 %	68	0.2 %	62.2	0.2 %
Filipino	1,856	6.4 %	1,718.8	6.4 %	1,840	6.3 %	1,724.1	6.3 %
Multiple Ethnicities	1,945	6.7 %	1,849.9	6.8 %	2,002	6.8 %	1,905.7	6.9 %
Students of Color Total	15,842	54.5 %	14,620.0	54.1 %	15,935	54.2 %	14,769.8	53.8 %
All Others								
White	9,877	34.0 %	9,382.9	34.7 %	10,041	34.2 %	9,551.9	34.8 %
Other, Not Stated	1,290	4.4 %	1,101.2	4.1 %	1,278	4.4 %	1,098.5	4.0 %
International	2,037	7.0 %	1,939.6	7.2 %	2,123	7.2 %	2,021.5	7.4 %
All Others Total	13,204	45.5 %	12,423.7	45.9 %	13,442	45.8 %	12,671.9	46.2 %
Grand Total	29,046	100.0 %	27,043.7	100.0 %	29,377	100.0 %	27,441.7	100.0 %

FIRST-TIME FRESHMAN ENROLLMENT



FALL 2017 FIRST-TIME FRESHMEN

Academic Indicators by Admission Area

Average High School GPA, Average Test Scores, and Average Eligibility Index *San Diego Campus*

Values	Local	Non-Local	Total
Enroll	1,618	3,683	5,301
Avg HS GPA	3.69	3.72	3.71
Avg SAT	1,154	1,218	1,195
Avg ACT	23.2	26.1	25.4
Avg EI	4120	4235	4199



FIRST-TIME FRESHMEN ENROLLMENT

By Resident Status, Admission Area, and Ethnicity

San Diego Campus

	Resident/Exempt		Resident/ Exempt Enrl	Resident/ Exempt % Ethnicity	Interntl (F)		Out of State (N) Enrl	Out of State (N) % Ethnicity	Total Enrl	Total % Ethnicity
	Local	Non-Local Area			Interntl (F)	Enrl				
	Enrl	Enrl				% Ethnicity				
Students of Color										
Native American	4	18	22	0.5 %			5	0.6 %	27	0.5 %
African American	53	129	182	4.4 %			25	3.0 %	207	3.9 %
Hispanic, Latino	739	581	1320	31.8 %			97	11.8 %	1417	26.7 %
Asian	132	200	332	8.0 %			31	3.8 %	363	6.8 %
Pacific Islander, Native Hawaiian	5	6	11	0.3 %			1	0.1 %	12	0.2 %
Filipino	158	120	278	6.7 %			9	1.1 %	287	5.4 %
Multiple Ethnicities	118	224	342	8.2 %			75	9.1 %	417	7.9 %
Students of Color Total	1,209	1,278	2487	59.9 %			243	29.6 %	2730	51.5 %
All Others										
White	336	1,139	1475	35.5 %			525	63.9 %	2000	37.7 %
Other, Not Stated	35	119	154	3.7 %			49	6.0 %	203	3.8 %
International	26	8	34	0.8 %	329	100.0 %	5	0.6 %	368	6.9 %
All Others Total	397	1,266	1663	40.1 %	329	100.0 %	579	70.4 %	2571	48.5 %
Grand Total	1,606	2,544	4150	100.0 %	329	100.0 %	822	100.0 %	5301	100.0 %

NEW UNDERGRADUATE TRANSFER ENROLLMENT



NEW UNDERGRADUATE TRANSFERS & READMIT ENROLLMENT *By Resident Status, Admissions Area, & Ethnicity*

San Diego Campus

Row Labels	Resident/Exempt		Resident/ Exempt Enrl	Resident/Exempt % Ethnicity	Interntl (F) Enrl	Out of State (N) Enrl	Total Enrl	Total % Ethnicity
	Local	Non-Local Area						
	Enrl	Enrl						
Students of Color								
Native American	4	5	9	0.3 %		1	10	0.3 %
African American	76	26	102	3.3 %		2	104	3.3 %
Hispanic, Latino	1,005	218	1223	39.9 %		5	1228	38.4 %
Asian	136	46	182	5.9 %		1	183	5.7 %
Pacific Islander, Native Hawaiian	8	3	11	0.4 %			11	0.3 %
Filipino	169	33	202	6.6 %			202	6.3 %
Multiple Ethnicities	116	60	176	5.7 %		1	177	5.5 %
Students of Color Total	1,514	391	1905	62.2 %		10	1915	59.9 %
All Others								
White	655	280	935	30.5 %		11	946	29.6 %
Other, Not Stated	124	51	175	5.7 %		2	177	5.5 %
International	38	10	48	1.6 %	108	1	157	4.9 %
All Others Total	817	341	1158	37.8 %	108	14	1280	40.1 %
Grand Total	2,331	732	3063	100.0 %	108	24	3195	100.0 %

FIRST-TIME FRESHMEN CONTINUATION & GRADUATION RATES



FIRST-TIME FRESHMEN ONE-YEAR CONTINUATION RATES

By Ethnicity

San Diego Campus

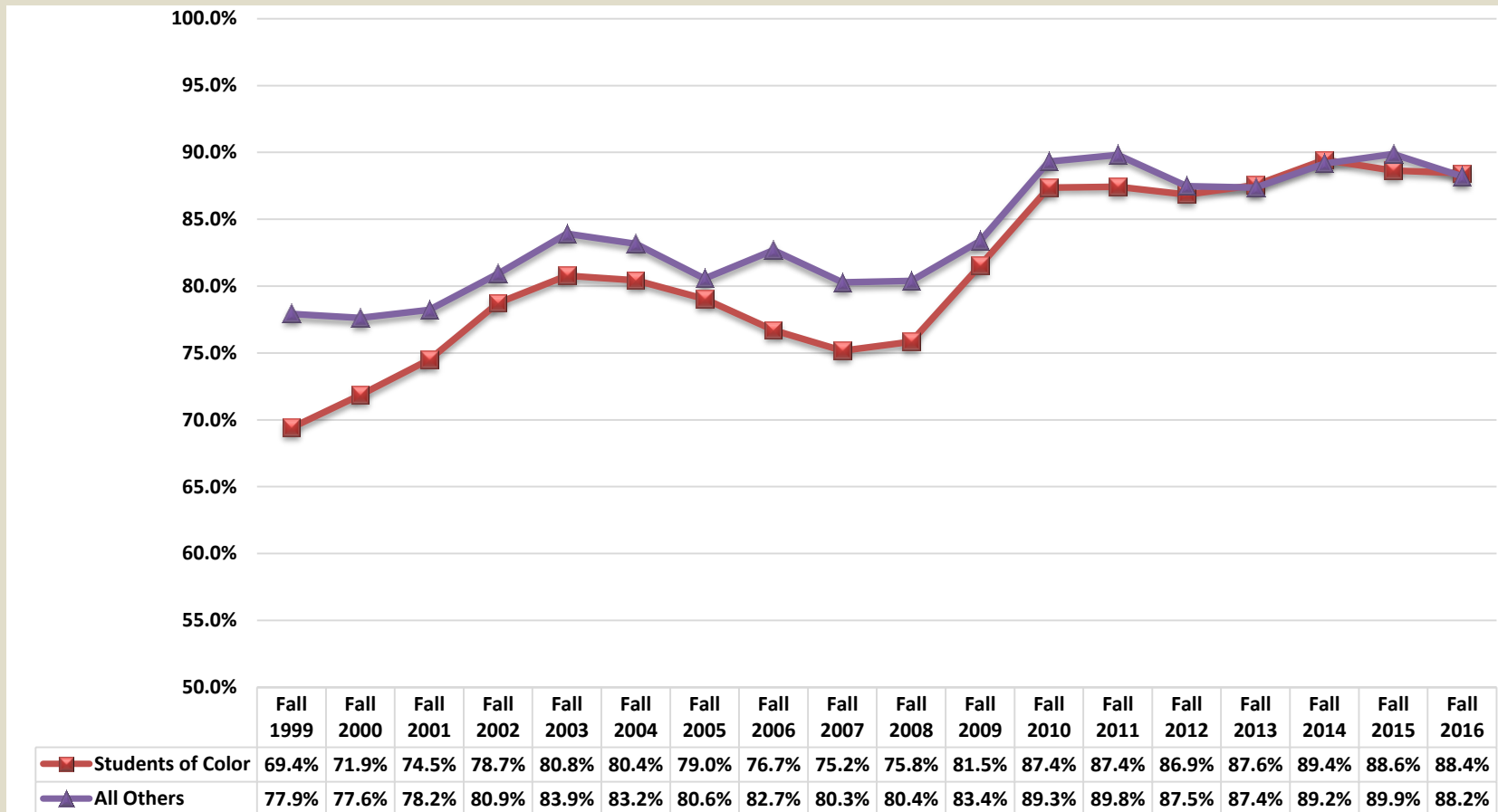
	Fall 1999	Fall 2000	Fall 2001	Fall 2002	Fall 2003	Fall 2004	Fall 2005	Fall 2006	Fall 2007	Fall 2008	Fall 2009	Fall 2010	Fall 2011	Fall 2012	Fall 2013	Fall 2014	Fall 2015	Fall 2016
Students of Color																		
Native American	68.2%	66.7%	70.4%	72.4%	85.0%	80.0%	79.2%	79.3%	71.4%	80.0%	75.0%	57.1%	70.0%	100.0%	75.0%	81.8%	89.5%	95.2%
African American	60.1%	61.3%	70.7%	79.5%	79.6%	84.6%	82.5%	76.6%	75.8%	68.9%	81.6%	81.5%	87.7%	85.7%	84.0%	89.1%	89.8%	84.7%
Hispanic, Latino	66.0%	71.0%	71.2%	76.2%	79.5%	76.5%	77.9%	73.7%	72.2%	73.4%	81.3%	87.2%	86.0%	86.0%	87.2%	88.3%	86.4%	87.2%
Asian	75.1%	74.4%	78.9%	80.9%	82.0%	83.2%	82.0%	82.3%	80.4%	82.0%	81.7%	89.4%	91.2%	87.7%	89.2%	92.9%	94.5%	91.9%
Pacific Islander, Native Hawaiian	56.0%	64.5%	60.7%	76.7%	69.2%	84.2%	66.7%	73.8%	68.9%	55.1%	63.6%	92.9%	62.5%	76.5%	81.0%	100.0%	78.6%	73.3%
Filipino	78.7%	80.8%	81.0%	83.0%	84.0%	85.5%	79.0%	80.0%	79.1%	83.4%	84.7%	89.6%	91.7%	88.7%	92.5%	92.3%	89.5%	91.9%
Multiple Ethnicities											79.5%	87.6%	86.2%	88.9%	85.8%	88.0%	88.7%	89.2%
Students of Color Total	69.4%	71.9%	74.5%	78.7%	80.8%	80.4%	79.0%	76.7%	75.2%	75.8%	81.5%	87.4%	87.4%	86.9%	87.6%	89.4%	88.6%	88.4%
All Others																		
White	79.5%	77.9%	78.5%	81.1%	84.2%	83.7%	80.4%	82.5%	80.5%	81.1%	83.9%	89.3%	90.1%	87.6%	87.5%	89.9%	90.9%	89.7%
Other, Not Stated	72.8%	77.0%	77.7%	82.1%	82.5%	80.8%	81.2%	84.2%	79.4%	79.0%	83.5%	92.4%	83.2%	84.2%	85.6%	89.6%	88.2%	83.9%
International	67.9%	71.4%	72.7%	60.0%	78.6%	74.3%	88.0%	77.8%	78.8%	70.0%	73.5%	85.5%	92.5%	89.3%	87.2%	84.5%	85.7%	82.3%
All Others Total	77.9%	77.6%	78.2%	80.9%	83.9%	83.2%	80.6%	82.7%	80.3%	80.4%	83.4%	89.3%	89.8%	87.5%	87.4%	89.2%	89.9%	88.2%
Grand Total	74.5%	75.3%	76.7%	80.1%	82.7%	82.1%	79.9%	80.1%	78.0%	78.2%	82.3%	88.3%	88.5%	87.1%	87.5%	89.3%	89.2%	88.3%



FIRST-TIME FRESHMEN ONE-YEAR CONTINUATION RATES

By Ethnicity — Students of Color

San Diego Campus





FIRST-TIME FULL-TIME FRESHMEN GRADUATION RATES *By Ethnicity*

San Diego Campus

Four-Year Graduation Rates

	Fall 1999	Fall 2000	Fall 2001	Fall 2002	Fall 2003	Fall 2004	Fall 2005	Fall 2006	Fall 2007	Fall 2008	Fall 2009	Fall 2010	Fall 2011	Fall 2012	Fall 2013
Students of Color															
Native American	5.3 %	16.7 %	21.1 %	16.0 %	25.0 %	44.4 %	30.0 %	36.0 %	33.3 %	25.9 %	12.5 %	28.6 %	20.0 %	50.0 %	27.3 %
African American	5.5 %	11.5 %	19.2 %	17.1 %	21.5 %	33.0 %	22.1 %	26.0 %	22.0 %	24.2 %	20.0 %	24.0 %	29.9 %	26.1 %	28.8 %
Hispanic, Latino	9.4 %	14.5 %	15.0 %	16.8 %	23.3 %	22.7 %	23.6 %	24.6 %	24.4 %	21.1 %	23.7 %	24.3 %	28.3 %	29.2 %	32.8 %
Asian	13.3 %	13.2 %	17.9 %	19.4 %	27.5 %	23.3 %	31.0 %	28.3 %	29.0 %	26.5 %	27.2 %	32.1 %	29.5 %	36.7 %	39.2 %
Pacific Islander, Native Hawaiian	4.8 %	11.1 %	9.1 %	18.5 %	17.4 %	24.1 %	39.3 %	21.6 %	31.7 %	17.5 %	0.0 %	25.0 %	25.0 %	35.7 %	47.4 %
Filipino	11.9 %	12.8 %	11.6 %	20.4 %	16.7 %	23.1 %	21.1 %	21.9 %	25.9 %	15.4 %	16.3 %	22.0 %	19.3 %	25.9 %	34.2 %
Multiple Ethnicities											30.7 %	31.0 %	34.0 %	41.9 %	36.0 %
Students of Color Total	10.1 %	13.6 %	15.5 %	18.0 %	22.8 %	24.1 %	24.7 %	25.0 %	25.7 %	21.1 %	23.5 %	26.0 %	28.0 %	31.2 %	34.3 %
All Others															
White	16.5 %	19.3 %	21.7 %	28.5 %	32.8 %	34.2 %	32.9 %	36.4 %	37.7 %	38.1 %	37.2 %	42.6 %	45.0 %	45.5 %	46.9 %
Other, Not Stated	14.7 %	16.3 %	24.1 %	23.3 %	26.4 %	29.4 %	30.4 %	38.0 %	38.8 %	29.0 %	36.5 %	40.6 %	36.4 %	43.8 %	46.7 %
International	12.2 %	13.8 %	26.8 %	16.7 %	13.5 %	37.0 %	38.9 %	35.5 %	36.8 %	33.9 %	30.2 %	16.9 %	50.6 %	24.3 %	34.4 %
All Others Total	16.0 %	18.7 %	22.2 %	27.5 %	31.7 %	33.5 %	32.6 %	36.6 %	37.8 %	36.6 %	36.9 %	41.4 %	44.8 %	44.0 %	45.9 %
Grand Total	13.9 %	16.8 %	19.6 %	24.0 %	28.4 %	30.2 %	29.6 %	32.1 %	33.1 %	29.5 %	30.1 %	33.7 %	36.0 %	37.0 %	39.6 %

Five-Year Graduation Rates

Row Labels	Fall 1999	Fall 2000	Fall 2001	Fall 2002	Fall 2003	Fall 2004	Fall 2005	Fall 2006	Fall 2007	Fall 2008	Fall 2009	Fall 2010	Fall 2011	Fall 2012
Students of Color														
Native American	31.6 %	50.0 %	47.4 %	48.0 %	55.0 %	61.1 %	55.0 %	60.0 %	66.7 %	66.7 %	12.5 %	28.6 %	30.0 %	100.0 %
African American	19.1 %	37.7 %	42.3 %	51.8 %	48.8 %	59.8 %	49.0 %	54.7 %	54.3 %	44.5 %	40.0 %	51.0 %	67.3 %	62.3 %
Hispanic, Latino	31.1 %	41.8 %	40.3 %	45.1 %	49.7 %	52.7 %	48.9 %	54.5 %	50.3 %	49.0 %	51.4 %	58.6 %	61.7 %	63.1 %
Asian	38.9 %	40.6 %	45.5 %	53.1 %	58.1 %	63.3 %	57.7 %	61.6 %	59.8 %	52.3 %	60.2 %	63.8 %	69.3 %	66.4 %
Pacific Islander, Native Hawaiian	33.3 %	29.6 %	31.8 %	48.1 %	39.1 %	51.7 %	60.7 %	58.8 %	53.7 %	30.0 %	30.0 %	75.0 %	37.5 %	64.3 %
Filipino	39.5 %	43.9 %	43.0 %	44.6 %	47.1 %	53.8 %	52.0 %	48.4 %	54.1 %	44.0 %	48.8 %	60.2 %	57.0 %	64.0 %
Multiple Ethnicities											55.1 %	59.3 %	64.1 %	72.0 %
Students of Color Total	33.2 %	41.3 %	42.3 %	47.6 %	50.9 %	55.7 %	51.6 %	54.9 %	53.6 %	48.0 %	51.5 %	59.1 %	62.5 %	64.8 %
All Others														
White	48.5 %	51.0 %	49.8 %	57.4 %	62.7 %	60.4 %	61.7 %	62.5 %	63.1 %	64.3 %	67.2 %	71.7 %	73.3 %	73.8 %
Other, Not Stated	43.1 %	45.4 %	51.1 %	53.3 %	56.6 %	59.8 %	58.8 %	63.8 %	64.6 %	57.3 %	64.7 %	73.6 %	63.6 %	70.3 %
International	39.0 %	37.9 %	43.9 %	40.0 %	51.4 %	63.0 %	72.2 %	51.6 %	60.3 %	58.1 %	64.2 %	52.5 %	71.1 %	60.7 %
All Others Total	47.3 %	49.9 %	49.9 %	56.5 %	61.8 %	60.3 %	61.4 %	62.5 %	63.2 %	63.1 %	66.9 %	71.0 %	72.6 %	72.7 %
Grand Total	42.2 %	46.7 %	47.0 %	53.2 %	57.8 %	58.7 %	57.7 %	59.6 %	59.5 %	56.2 %	59.1 %	65.1 %	67.3 %	68.4 %



FIRST-TIME FULL-TIME FRESHMEN GRADUATION RATES *By Ethnicity*

San Diego Campus

Six-Year Graduation Rates

	Fall 1999	Fall 2000	Fall 2001	Fall 2002	Fall 2003	Fall 2004	Fall 2005	Fall 2006	Fall 2007	Fall 2008	Fall 2009	Fall 2010	Fall 2011
Students of Color													
Native American	42.1 %	66.7 %	57.9 %	60.0 %	65.0 %	61.1 %	60.0 %	64.0 %	70.4 %	70.4 %	25.0 %	28.6 %	50.0 %
African American	25.5 %	45.4 %	50.0 %	62.2 %	58.7 %	63.4 %	55.8 %	63.3 %	64.0 %	57.0 %	53.0 %	64.6 %	72.0 %
Hispanic, Latino	42.8 %	53.3 %	51.8 %	52.8 %	60.3 %	61.4 %	58.3 %	61.7 %	59.7 %	59.1 %	63.0 %	70.1 %	72.5 %
Asian	51.2 %	56.9 %	55.5 %	61.9 %	68.7 %	73.1 %	69.5 %	69.4 %	69.3 %	66.7 %	74.9 %	73.5 %	81.6 %
Pacific Islander, Native Hawaiian	33.3 %	33.3 %	31.8 %	63.0 %	47.8 %	58.6 %	60.7 %	60.8 %	58.5 %	40.0 %	40.0 %	83.3 %	50.0 %
Filipino	59.0 %	56.1 %	54.7 %	60.0 %	59.9 %	65.2 %	62.9 %	61.9 %	64.2 %	65.4 %	65.4 %	75.0 %	72.2 %
Multiple Ethnicities											64.9 %	71.8 %	73.0 %
Students of Color Total	45.7 %	53.2 %	52.8 %	57.4 %	61.8 %	64.6 %	61.3 %	63.4 %	63.0 %	61.1 %	64.0 %	71.1 %	73.5 %
Other													
White	58.8 %	60.0 %	57.3 %	64.1 %	69.5 %	67.4 %	68.7 %	68.2 %	69.1 %	71.8 %	73.3 %	77.4 %	78.0 %
Other, Not Stated	51.3 %	58.5 %	62.6 %	62.0 %	67.5 %	65.6 %	66.8 %	70.9 %	71.4 %	69.6 %	73.1 %	81.1 %	66.4 %
International	46.3 %	51.7 %	63.4 %	46.7 %	59.5 %	63.0 %	72.2 %	64.5 %	69.1 %	61.3 %	69.8 %	61.0 %	74.7 %
Other Total	57.1 %	59.6 %	58.3 %	63.5 %	69.1 %	67.1 %	68.5 %	68.5 %	69.4 %	71.2 %	73.2 %	77.1 %	77.1 %
Grand Total	53.0 %	57.3 %	56.1 %	61.3 %	66.4 %	66.2 %	65.7 %	66.5 %	66.9 %	66.6 %	68.5 %	74.1 %	75.3 %

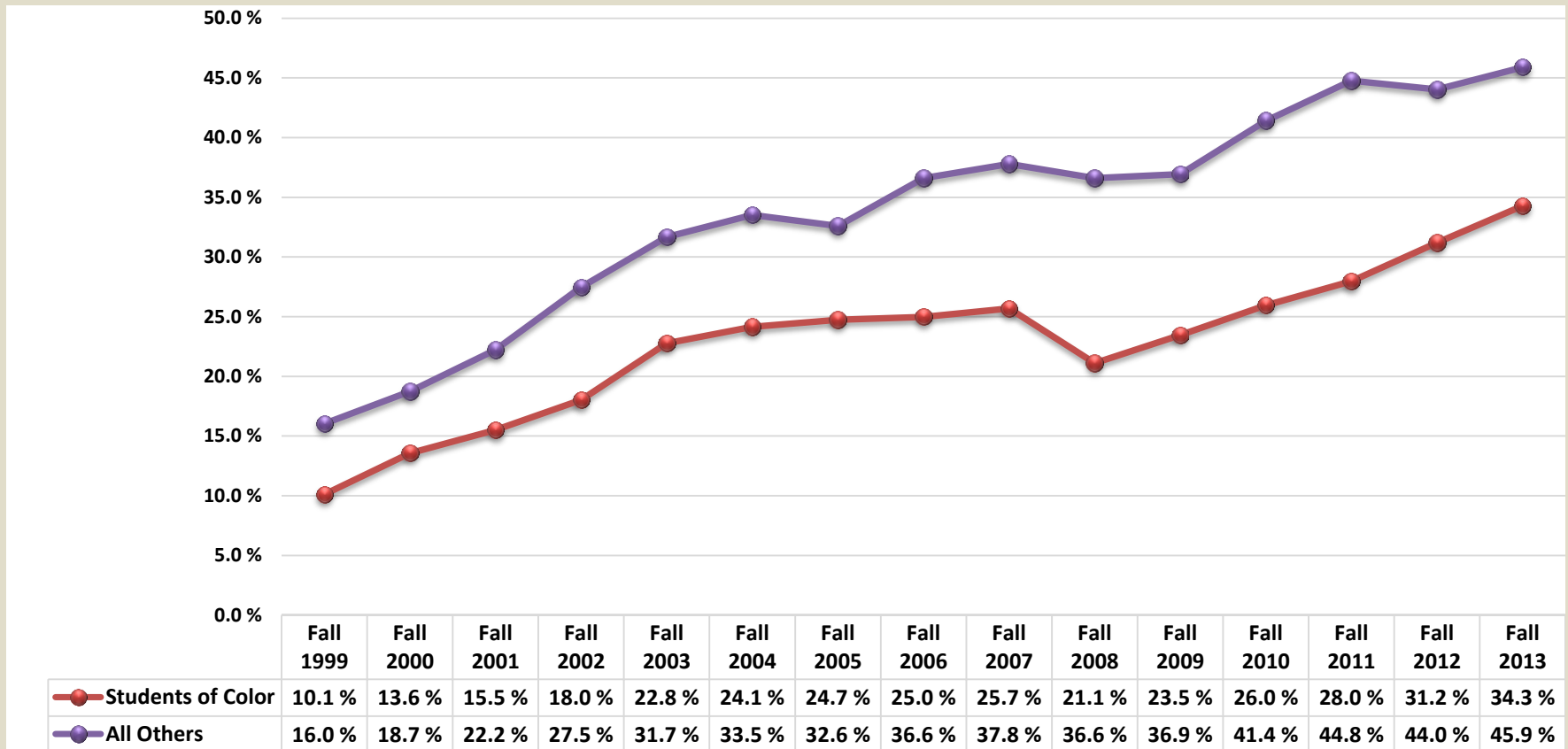
Cohort Enrollment

	Fall 1999	Fall 2000	Fall 2001	Fall 2002	Fall 2003	Fall 2004	Fall 2005	Fall 2006	Fall 2007	Fall 2008	Fall 2009	Fall 2010	Fall 2011	Fall 2012	Fall 2013
Students of Color															
Native American	19	18	19	25	20	18	20	25	27	27	8	7	10	2	11
African American	110	130	156	164	121	112	104	150	164	128	100	96	107	138	132
Hispanic, Latino	456	495	568	614	572	596	609	736	837	833	886	736	948	1134	1259
Asian	203	197	319	273	284	245	239	297	348	264	191	196	261	259	378
Pacific Islander, Native Hawaiian	21	27	22	27	23	29	28	51	41	40	10	12	8	14	19
Filipino	210	187	258	240	227	247	294	310	316	318	246	236	270	286	263
Multiple Ethnicities											205	216	256	279	339
Students of Color Total	1019	1054	1342	1343	1247	1247	1294	1569	1733	1610	1646	1499	1860	2112	2401
Other															
White	1433	1483	1753	1890	1858	1902	1803	2157	2310	1573	1386	1330	1530	1482	1736
Other, Not Stated	341	282	348	400	265	323	289	326	353	286	156	106	107	128	135
International	41	29	41	30	37	27	18	31	68	62	53	59	83	107	160
Other Total	1815	1794	2142	2320	2160	2252	2110	2514	2731	1921	1595	1495	1720	1717	2031
Grand Total	2834	2848	3484	3663	3407	3499	3404	4083	4464	3531	3241	2994	3580	3829	4432



FIRST-TIME FULL-TIME FRESHMEN FOUR-YEAR GRADUATION RATES *By Ethnicity — Students of Color*

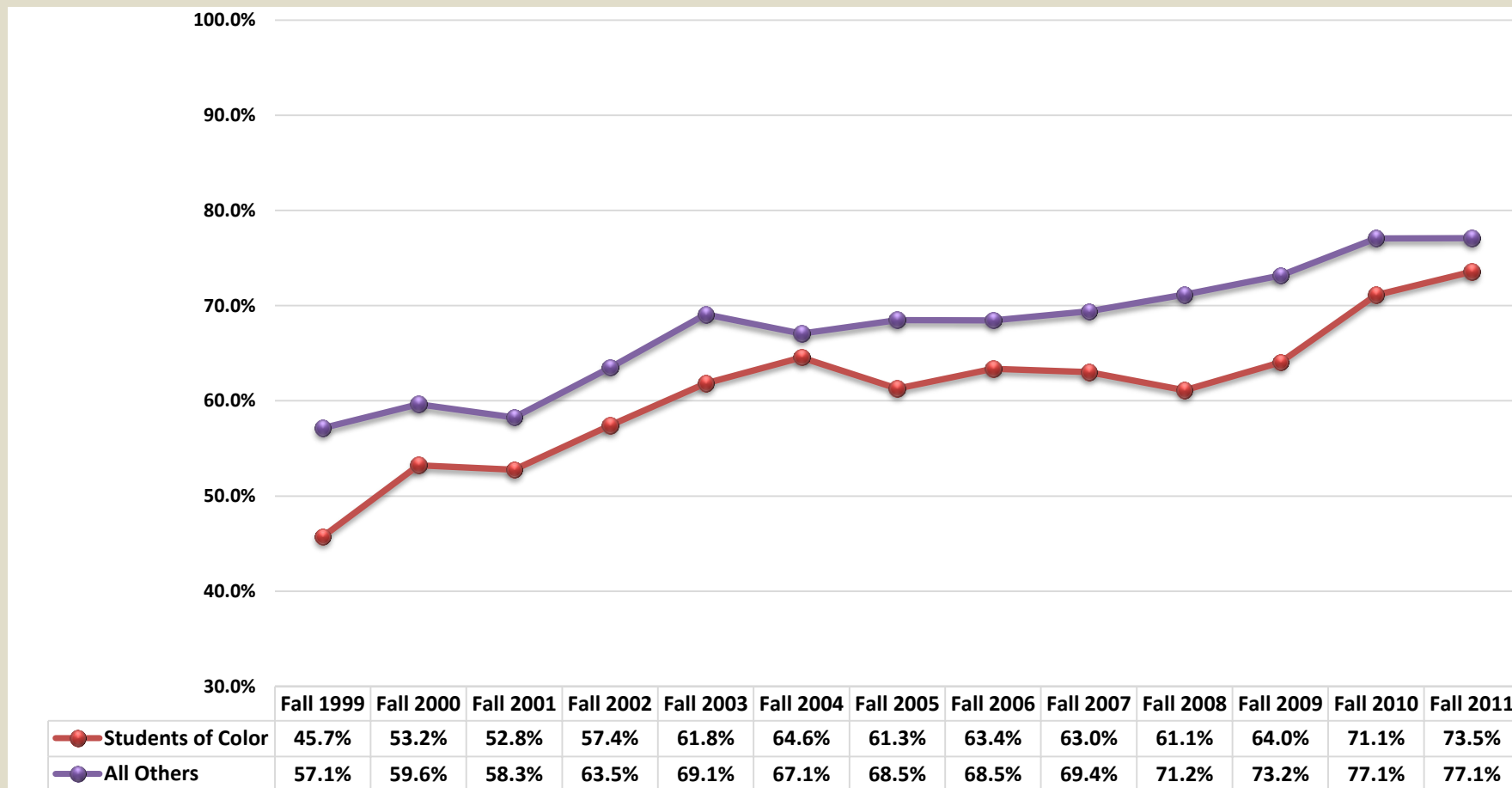
San Diego Campus





FIRST-TIME FULL-TIME FRESHMEN SIX-YEAR GRADUATION RATES *By Ethnicity — Students of Color*

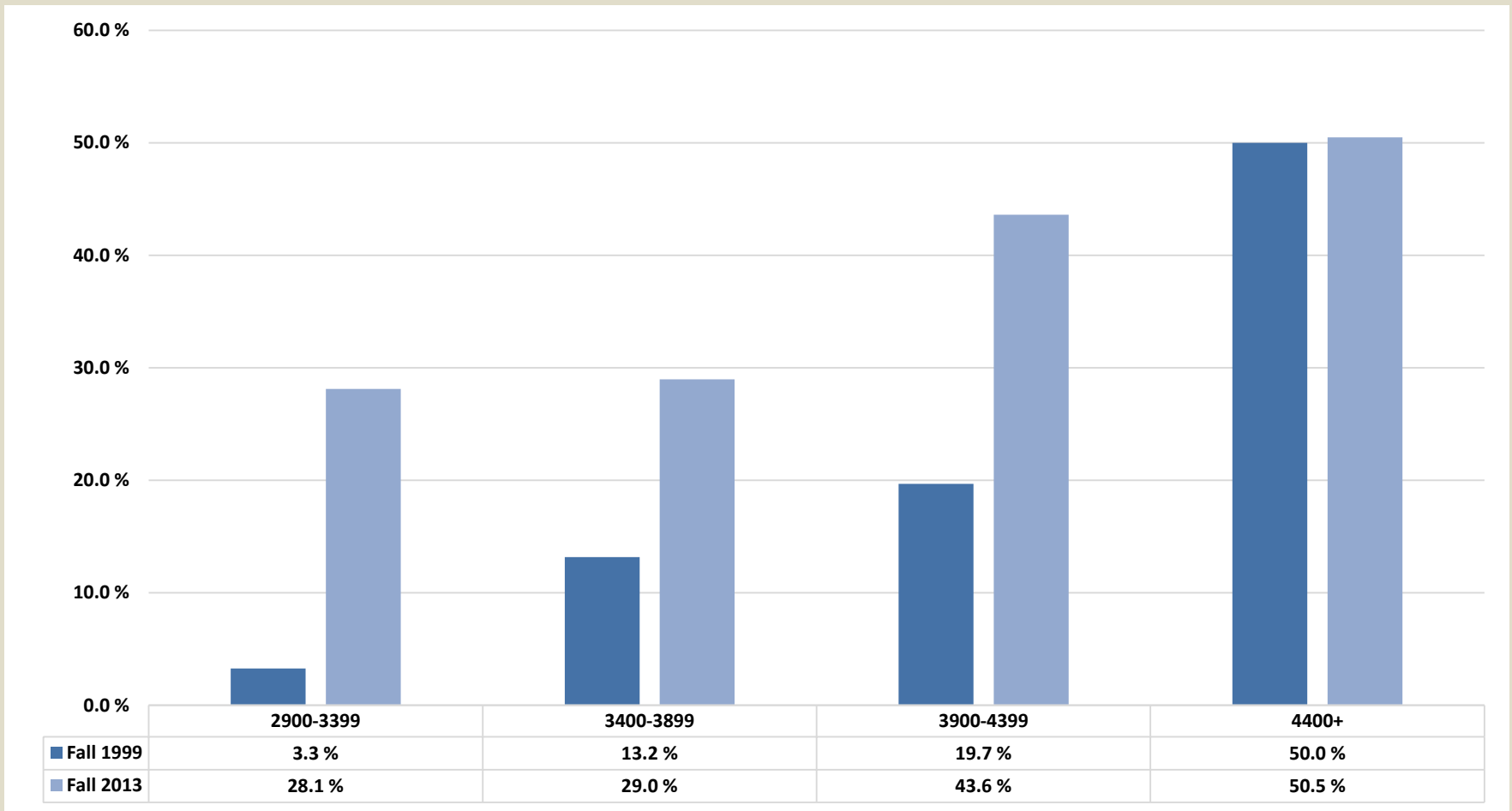
San Diego Campus





FIRST-TIME FULL-TIME FRESHMEN FOUR-YEAR GRADUATION RATES *By Eligibility Index Range*

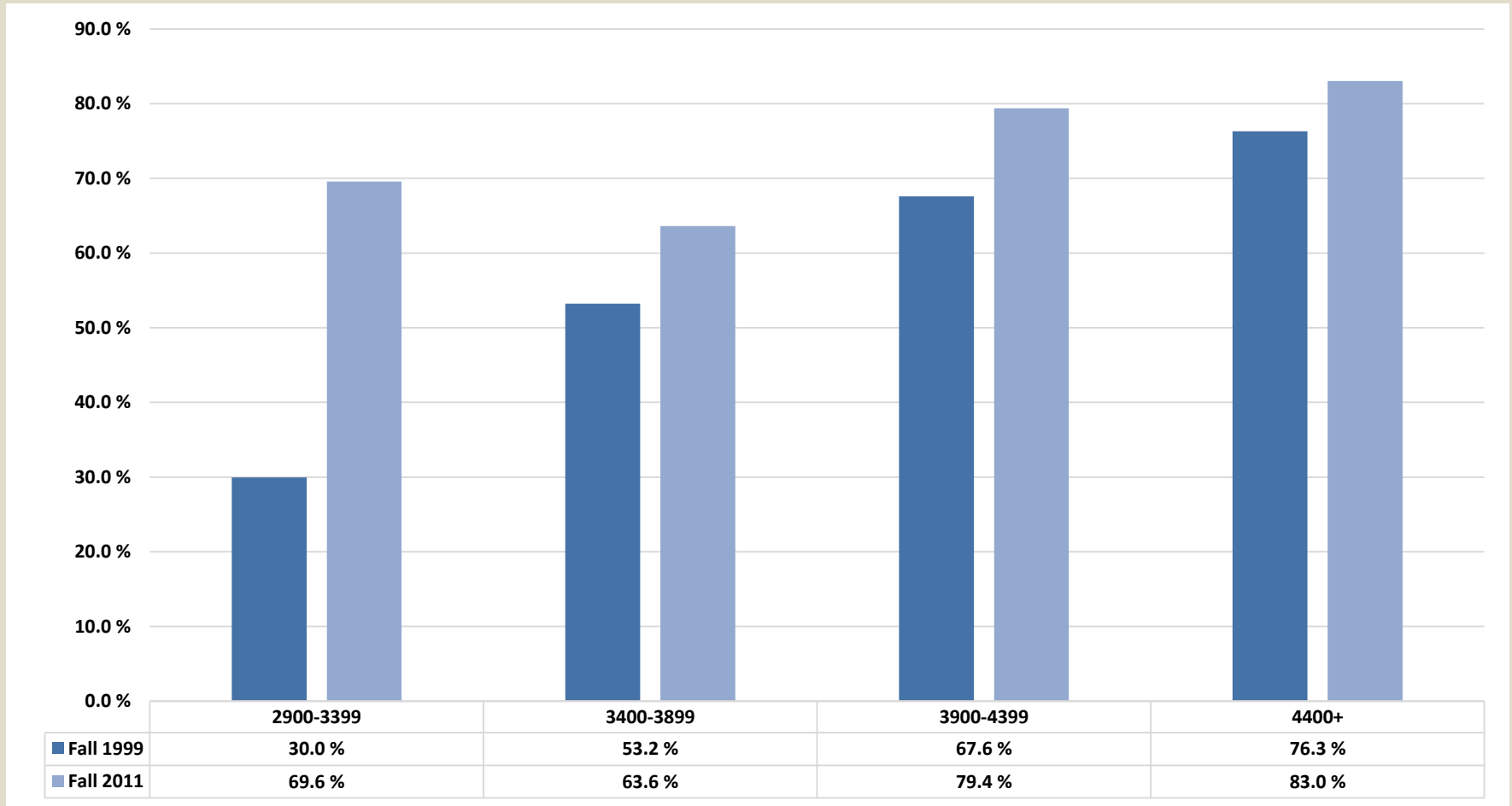
San Diego Campus





FIRST-TIME FULL-TIME FRESHMEN SIX-YEAR GRADUATION RATES *By Eligibility Index Range*

San Diego Campus



NEW UNDERGRADUATE TRANSFER CONTINUATION & GRADUATION RATES



NEW UNDERGRADUATE TRANSFERS & READMITS

ONE-YEAR CONTINUATION RATES *By Ethnicity*

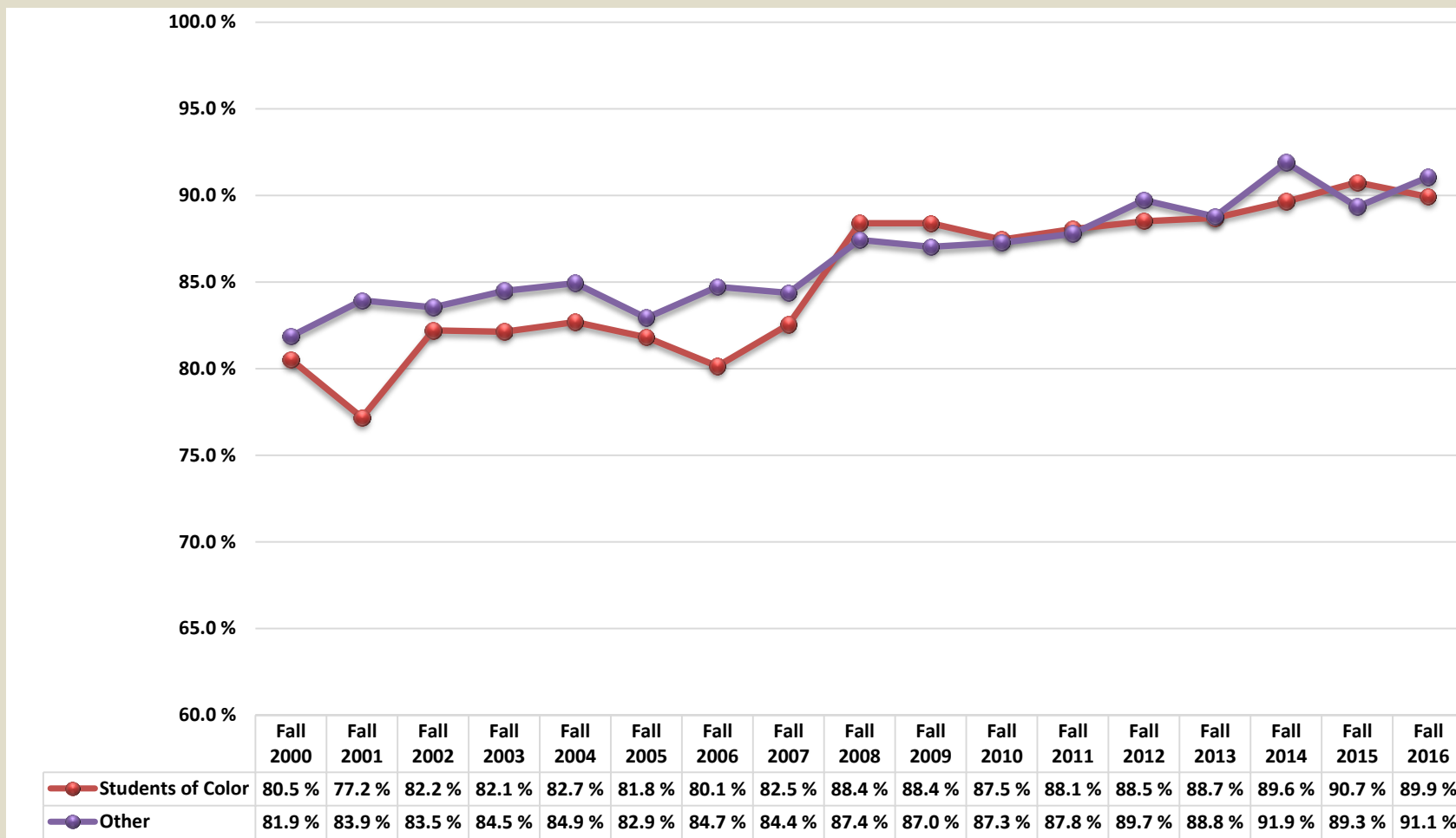
San Diego Campus

Row Labels	Fall 2000	Fall 2001	Fall 2002	Fall 2003	Fall 2004	Fall 2005	Fall 2006	Fall 2007	Fall 2008	Fall 2009	Fall 2010	Fall 2011	Fall 2012	Fall 2013	Fall 2014	Fall 2015	Fall 2016
Students of Color																	
Native American	84.0%	70.0%	82.6%	84.0%	68.4%	75.8%	67.6%	91.2%	92.9%	71.4%	100.0%	85.7%	86.7%	89.5%	100.0%	76.9%	100.0%
African American	80.4%	80.0%	73.8%	83.1%	85.6%	80.7%	74.5%	80.1%	83.0%	93.5%	87.5%	78.5%	89.1%	85.6%	89.1%	92.6%	92.4%
Hispanic, Latino	80.6%	76.8%	83.6%	83.2%	83.0%	82.1%	80.9%	83.4%	88.3%	89.5%	87.5%	88.9%	87.9%	88.2%	89.5%	90.0%	89.7%
Asian	78.6%	81.9%	81.2%	79.9%	85.6%	84.8%	83.4%	80.9%	90.0%	85.1%	82.7%	88.0%	89.1%	88.0%	90.4%	92.2%	89.8%
Pacific Islander, Native Hawaiian	85.7%	78.9%	78.9%	89.7%	86.7%	70.0%	66.7%	87.9%	89.2%	94.4%	91.7%	66.7%	90.0%	85.7%	60.0%	100.0%	88.9%
Filipino	81.0%	72.2%	83.9%	78.9%	79.0%	80.5%	81.2%	80.5%	89.6%	83.1%	91.7%	91.7%	87.3%	92.7%	91.5%	91.7%	92.9%
Multiple Ethnicities										89.8%	88.3%	87.5%	92.6%	90.9%	88.8%	92.3%	86.8%
Students of Color Total	80.5%	77.2%	82.2%	82.1%	82.7%	81.8%	80.1%	82.5%	88.4%	88.4%	87.5%	88.1%	88.5%	88.7%	89.6%	90.7%	89.9%
All Others																	
White	83.0%	83.7%	83.9%	84.8%	85.8%	83.7%	83.6%	84.4%	87.6%	88.0%	88.0%	88.6%	89.8%	88.9%	93.8%	90.3%	91.9%
Other, Not Stated	80.2%	84.5%	81.4%	83.8%	83.6%	81.7%	87.5%	84.7%	87.4%	88.6%	90.4%	84.7%	90.3%	89.4%	85.9%	85.8%	87.4%
International	77.6%	84.4%	87.3%	82.8%	80.9%	78.1%	90.2%	83.3%	85.7%	79.8%	78.3%	87.6%	88.5%	87.1%	87.4%	88.4%	90.1%
All Others Total	81.9%	83.9%	83.5%	84.5%	84.9%	82.9%	84.7%	84.4%	87.4%	87.0%	87.3%	87.8%	89.7%	88.8%	91.9%	89.3%	91.1%
Grand Total	81.4%	81.5%	83.0%	83.5%	84.0%	82.5%	82.8%	83.6%	87.8%	87.7%	87.4%	87.9%	89.1%	88.7%	90.7%	90.1%	90.4%



NEW UNDERGRADUATE TRANSFERS & READMITS ONE-YEAR CONTINUATION RATES *By Ethnicity—Students of Color*

San Diego Campus





NEW UPPER DIVISION FULL-TIME TRANSFERS

GRADUATION RATES *By Ethnicity*

San Diego Campus

Two-Year Graduation Rates

	Fall 2000	Fall 2001	Fall 2002	Fall 2003	Fall 2004	Fall 2005	Fall 2006	Fall 2007	Fall 2008	Fall 2009	Fall 2010	Fall 2011	Fall 2012	Fall 2013	Fall 2014	Fall 2015
Native American	25.0 %	7.7 %	19.0 %	31.6 %	37.1 %	48.0 %	16.7 %	40.7 %	33.3 %	27.3 %	28.6 %	66.7 %	38.5 %	46.7 %	0.0 %	45.5 %
African American	23.1 %	25.0 %	18.2 %	23.8 %	33.3 %	35.9 %	34.9 %	27.3 %	24.7 %	35.6 %	40.8 %	30.2 %	39.2 %	33.7 %	40.4 %	42.9 %
Hispanic, Latino	18.8 %	19.9 %	25.6 %	30.6 %	31.3 %	30.3 %	31.7 %	29.7 %	37.5 %	41.6 %	44.8 %	37.0 %	38.8 %	42.2 %	44.2 %	48.1 %
Asian	22.5 %	16.7 %	29.1 %	27.3 %	43.0 %	43.3 %	31.6 %	28.1 %	38.7 %	26.9 %	35.0 %	29.1 %	36.0 %	31.3 %	37.7 %	34.7 %
Pacific Islander, Native Hawaiian	22.2 %	27.3 %	7.7 %	52.9 %	33.3 %	25.0 %	25.0 %	40.7 %	32.1 %	53.8 %	50.0 %	33.3 %	44.4 %	25.0 %	40.0 %	66.7 %
Filipino	32.1 %	21.1 %	30.4 %	26.4 %	29.9 %	30.0 %	27.9 %	29.7 %	28.5 %	35.5 %	40.0 %	25.6 %	39.1 %	36.5 %	40.8 %	53.2 %
Multiple Ethnicities										44.9 %	45.0 %	37.4 %	39.8 %	39.4 %	39.9 %	56.0 %
Total	21.8 %	19.9 %	25.7 %	29.2 %	33.4 %	33.4 %	31.1 %	29.7 %	35.1 %	39.0 %	42.7 %	34.8 %	38.6 %	39.5 %	42.4 %	47.9 %
All Others																
White	25.5 %	25.4 %	35.2 %	36.7 %	42.3 %	39.3 %	36.8 %	35.4 %	39.9 %	47.1 %	48.3 %	39.0 %	42.2 %	47.0 %	51.4 %	53.7 %
Other, Not Stated	22.7 %	27.8 %	27.6 %	34.5 %	40.7 %	41.4 %	33.4 %	31.2 %	32.9 %	45.3 %	44.5 %	36.6 %	49.1 %	40.6 %	45.1 %	53.1 %
International	30.6 %	29.7 %	47.2 %	38.1 %	41.2 %	47.5 %	41.6 %	38.8 %	42.2 %	41.0 %	49.2 %	43.2 %	52.3 %	42.9 %	46.5 %	49.4 %
All Others Total	25.3 %	26.3 %	34.3 %	36.4 %	41.9 %	40.3 %	36.4 %	34.9 %	38.9 %	45.9 %	47.8 %	39.3 %	44.0 %	45.6 %	50.0 %	53.1 %
Grand Total	24.1 %	24.2 %	31.2 %	33.8 %	38.5 %	37.6 %	34.4 %	32.9 %	37.5 %	42.8 %	45.3 %	37.1 %	41.2 %	42.4 %	45.9 %	50.2 %

Three-Year Graduation Rates

	Fall 2000	Fall 2001	Fall 2002	Fall 2003	Fall 2004	Fall 2005	Fall 2006	Fall 2007	Fall 2008	Fall 2009	Fall 2010	Fall 2011	Fall 2012	Fall 2013	Fall 2014
Native American	43.8 %	23.1 %	42.9 %	63.2 %	65.7 %	72.0 %	50.0 %	70.4 %	75.0 %	72.7 %	71.4 %	66.7 %	84.6 %	60.0 %	50.0 %
African American	48.1 %	48.3 %	43.9 %	55.0 %	52.8 %	63.2 %	54.7 %	64.6 %	64.4 %	69.9 %	78.9 %	69.8 %	72.2 %	67.4 %	70.8 %
Hispanic, Latino	54.0 %	48.7 %	58.7 %	62.8 %	64.9 %	65.7 %	64.9 %	64.1 %	71.8 %	74.0 %	75.7 %	71.5 %	75.3 %	74.9 %	81.8 %
Asian	55.0 %	55.6 %	61.9 %	66.0 %	73.4 %	73.8 %	70.6 %	64.8 %	76.7 %	70.4 %	73.3 %	69.9 %	71.9 %	76.3 %	80.9 %
Pacific Islander, Native Hawaiian															
Hawaiian	44.4 %	72.7 %	53.8 %	76.5 %	58.3 %	55.0 %	55.0 %	85.2 %	67.9 %	100.0 %	80.0 %	83.3 %	88.9 %	100.0 %	80.0 %
Filipino	64.1 %	53.5 %	62.7 %	56.0 %	60.6 %	67.5 %	65.4 %	69.0 %	70.1 %	61.8 %	75.0 %	67.9 %	76.6 %	80.3 %	80.0 %
Multiple Ethnicities										73.1 %	83.8 %	75.8 %	81.2 %	77.7 %	79.0 %
Total	54.6 %	50.2 %	58.0 %	61.9 %	64.7 %	67.0 %	64.4 %	65.5 %	71.7 %	72.1 %	76.3 %	71.4 %	75.4 %	75.3 %	80.5 %
All Others															
White	65.0 %	63.1 %	69.3 %	72.5 %	73.7 %	74.0 %	71.0 %	70.7 %	78.3 %	78.2 %	79.5 %	78.2 %	78.3 %	81.0 %	84.6 %
Other, Not Stated	57.7 %	58.8 %	64.2 %	68.3 %	70.3 %	73.2 %	67.8 %	67.9 %	70.7 %	69.8 %	78.1 %	67.9 %	78.7 %	74.4 %	77.8 %
International	76.5 %	73.9 %	78.7 %	77.3 %	73.6 %	77.1 %	69.0 %	76.3 %	73.3 %	73.9 %	77.8 %	79.5 %	83.1 %	79.9 %	82.4 %
All Others Total	64.2 %	63.0 %	68.8 %	72.0 %	73.1 %	74.1 %	70.3 %	70.7 %	76.5 %	76.1 %	79.1 %	76.8 %	78.8 %	79.9 %	83.4 %
Grand Total	61.0 %	58.9 %	65.0 %	68.3 %	69.7 %	71.3 %	68.0 %	68.7 %	74.8 %	74.3 %	77.7 %	74.2 %	77.1 %	77.5 %	81.8 %



NEW UPPER DIVISION FULL-TIME TRANSFERS

GRADUATION RATES *By Ethnicity*

Four-Year Graduation Rates

Row Labels	Fall 2000	Fall 2001	Fall 2002	Fall 2003	Fall 2004	Fall 2005	Fall 2006	Fall 2007	Fall 2008	Fall 2009	Fall 2010	Fall 2011	Fall 2012	Fall 2013
Native American	68.8 %	38.5 %	61.9 %	68.4 %	74.3 %	76.0 %	58.3 %	77.8 %	75.0 %	90.9 %	100.0 %	66.7 %	92.3 %	66.7 %
African American	57.7 %	56.7 %	54.5 %	72.5 %	61.1 %	70.1 %	67.9 %	71.7 %	75.3 %	84.9 %	90.1 %	90.7 %	82.5 %	78.7 %
Hispanic, Latino	66.3 %	63.6 %	70.2 %	72.2 %	76.4 %	76.3 %	75.5 %	72.9 %	80.5 %	84.0 %	84.2 %	83.2 %	83.5 %	85.2 %
Asian	73.8 %	62.0 %	72.4 %	78.0 %	83.5 %	84.0 %	75.7 %	73.3 %	85.3 %	81.5 %	81.7 %	82.5 %	80.8 %	82.8 %
Pacific Islander, Native Hawaiian	44.4 %	72.7 %	61.5 %	76.5 %	75.0 %	70.0 %	75.0 %	92.6 %	78.6 %	100.0 %	90.0 %	83.3 %	88.9 %	100.0 %
Filipino	73.1 %	60.6 %	77.5 %	68.8 %	73.0 %	76.7 %	74.3 %	78.5 %	82.5 %	72.7 %	82.5 %	74.4 %	85.2 %	89.1 %
Multiple Ethnicities										83.3 %	88.8 %	86.8 %	89.5 %	84.0 %
Total	67.2 %	62.1 %	69.8 %	72.8 %	75.8 %	76.9 %	74.3 %	74.1 %	81.1 %	82.7 %	84.7 %	82.9 %	83.9 %	84.6 %
Other														
White	74.1 %	72.8 %	78.9 %	80.3 %	82.2 %	81.0 %	78.8 %	79.3 %	86.1 %	86.2 %	87.9 %	84.8 %	86.2 %	86.6 %
Other, Not Stated	70.4 %	70.9 %	75.3 %	77.0 %	81.0 %	81.9 %	76.3 %	79.4 %	79.9 %	77.1 %	87.1 %	79.1 %	87.0 %	85.0 %
International	80.0 %	83.8 %	84.3 %	86.6 %	82.4 %	83.1 %	82.3 %	84.2 %	82.0 %	81.4 %	84.1 %	87.7 %	88.5 %	84.4 %
Other Total	73.7 %	73.2 %	78.4 %	80.1 %	82.0 %	81.3 %	78.5 %	79.7 %	84.6 %	83.9 %	87.3 %	84.4 %	86.5 %	86.1 %
Grand Total	71.6 %	69.6 %	75.4 %	77.4 %	79.6 %	79.6 %	76.9 %	77.6 %	83.3 %	83.3 %	86.0 %	83.7 %	85.2 %	85.3 %

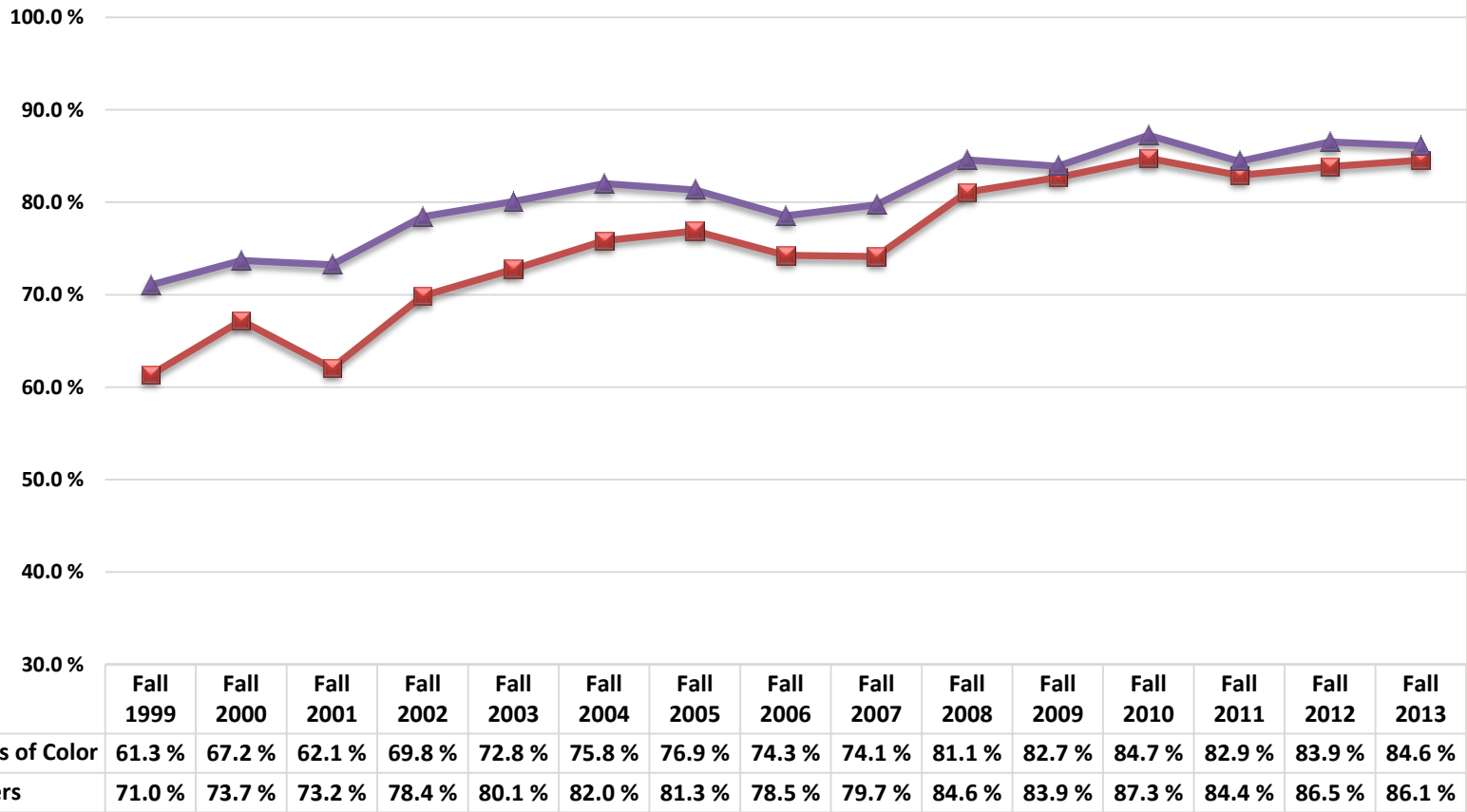
Cohort Enrollment

Row Labels	Fall 2000	Fall 2001	Fall 2002	Fall 2003	Fall 2004	Fall 2005	Fall 2006	Fall 2007	Fall 2008	Fall 2009	Fall 2010	Fall 2011	Fall 2012	Fall 2013	Fall 2014	Fall 2015
Native American	16	13	21	19	35	25	24	27	12	11	7	6	13	15	2	11
African American	52	60	66	80	72	117	106	99	73	73	71	43	97	89	89	112
Hispanic, Latino	335	396	450	457	559	630	609	697	507	531	556	487	935	943	884	1002
Asian	80	108	134	150	158	187	177	210	163	108	120	103	203	198	162	147
Pacific Islander, Native Hawaiian	9	11	13	17	24	20	20	27	28	13	10	6	9	4	5	6
Filipino	78	71	102	125	137	120	136	158	137	110	80	78	128	137	130	154
Multiple Ethnicities										78	80	91	133	175	138	168
Total	570	659	786	848	985	1099	1072	1218	920	924	924	814	1518	1561	1410	1600
Other																
White	823	962	971	1076	1059	1227	1281	1417	1171	753	669	600	1134	1036	887	910
Other, Not Stated	260	313	344	278	290	343	329	340	283	192	155	134	169	207	153	194
International	85	111	108	97	148	118	113	152	161	161	126	146	130	154	159	174
Other Total	1168	1386	1423	1451	1497	1688	1723	1909	1615	1106	950	880	1433	1397	1199	1278
Grand Total	1738	2045	2209	2299	2482	2787	2795	3127	2535	2030	1874	1694	2951	2958	2609	2878



NEW UPPER DIVISION FULL-TIME TRANSFERS FOUR-YEAR GRADUATION RATES *By Ethnicity—Students of* *Color*

San Diego Campus



GRADUATE ENROLLMENT



NEW GRADUATE ENROLLMENT POST-BACCALAUREATE & DEGREE-SEEKING *By Ethnicity*

San Diego Campus

	New Post-Bacc Fall 2016		Fall 2017		New Graduate Deg-Seeking Fall 2016		Fall 2017	
	Enroll	% Ethn	Enroll	% Ethn	Enroll	% Ethn	Enroll	% Ethn
Students of Color								
Native American	2	0.5%	2	0.5%	12	0.7%	2	0.1%
African American	5	1.3%	4	1.1%	66	3.6%	52	3.2%
Hispanic, Latino	127	33.0%	114	31.3%	386	20.9%	386	23.8%
Asian	13	3.4%	17	4.7%	110	6.0%	125	7.7%
Pacific Islander, Native Hawaiian					1	0.1%	2	0.1%
Filipino	16	4.2%	9	2.5%	51	2.8%	43	2.7%
Multiple Ethnicities	15	3.9%	17	4.7%	87	4.7%	91	5.6%
Students of Color Total	178	46.2%	163	44.8%	713	38.6%	701	43.2%
Other								
White	171	44.4%	164	45.1%	685	37.1%	610	37.6%
Other, Not Stated	30	7.8%	33	9.1%	138	7.5%	84	5.2%
International	6	1.6%	4	1.1%	309	16.7%	227	14.0%
Other Total	207	53.8%	201	55.2%	1132	61.4%	921	56.8%
Grand Total	385	100.0%	364	100.0%	1845	100.0%	1622	100.0%



TOTAL GRADUATE ENROLLMENT POST-BACCALAUREATE & DEGREE-SEEKING *By Ethnicity*

San Diego Campus

Row Labels	Graduate Post Bacc Fall 2016		Fall 2017		Master's Fall 2016		Fall 2017		Doctoral Fall 2016		Fall 2017	
	Enroll	% Ethn	Enroll	% Ethn	Enroll	% Ethn	Enroll	% Ethn	Enroll	% Ethn	Enroll	% Ethn
Students of Color												
Native American	2	0.4%	2	0.4%	19	0.5%	18	0.5%				
African American	6	1.2%	6	1.2%	121	3.4%	101	3.0%	29	4.8%	34	5.5%
Hispanic, Latino	166	32.2%	167	32.9%	721	20.0%	768	22.5%	110	18.2%	106	17.1%
Asian	15	2.9%	19	3.7%	232	6.4%	255	7.5%	36	5.9%	38	6.1%
Pacific Islander, Native Hawaiian					2	0.1%	2	0.1%	1	0.2%	2	0.3%
Filipino	21	4.1%	12	2.4%	95	2.6%	96	2.8%	8	1.3%	10	1.6%
Multiple Ethnicities	17	3.3%	24	4.7%	141	3.9%	172	5.0%	24	4.0%	32	5.2%
Students of Color Total	227	44.1%	230	45.4%	1331	36.9%	1412	41.4%	208	34.3%	222	35.8%
Other												
White	231	44.9%	228	45.0%	1295	35.9%	1245	36.5%	288	47.5%	291	46.9%
Other, Not Stated	50	9.7%	43	8.5%	285	7.9%	229	6.7%	42	6.9%	35	5.6%
International	7	1.4%	6	1.2%	700	19.4%	527	15.4%	68	11.2%	72	11.6%
Other Total	288	55.9%	277	54.6%	2280	63.1%	2001	58.6%	398	65.7%	398	64.2%
Grand Total	515	100.0%	507	100.0%	3611	100.0%	3413	100.0%	606	100.0%	620	100.0%

STATE & COUNTY COMPARISONS



SAN DIEGO COUNTY K-12 STUDENTS, HIGH SCHOOL GRADUATES, HIGH SCHOOL GRADUATES COMPLETING ALL A-G COURSES, AND LOCAL FIRST-TIME FRESHMEN

	2015/16 SD Cnty K-12 Students [1A]		2015/16 SD Cnty High School Graduates [1B]		2015/16 SD Cnty High School Graduates Completing all A-G Required Courses [1B]		Percentage of 2015/16 SD Cnty High School Graduates Completing all A-G Required Courses Within Each Diversity Category	Fall 2017 Local Area SDSU First-Time Freshman Enrollees [2]		Fall 2017 Local Area SDSU First-Time Freshman Enrollees - Diversity by Self- Identification [3]	
American Indian	2,550	0.5%	156	0.4%	58	0.3%	37.2%	4	0.3%	7	0.4%
African American	24,479	4.9%	1,818	5.2%	775	4.3%	42.6%	53	3.4%	74	4.7%
Hispanic	243,397	48.2%	16,331	46.6%	6,855	37.9%	42.0%	739	46.8%	651	41.2%
Asian	30,343	6.0%	2,024	5.8%	1,544	8.5%	76.3%	132	8.4%	316	20.0%
Pacific Islander	2,574	0.5%	217	0.6%	97	0.5%	44.7%	5	0.3%	14	0.9%
Filipino	20,006	4.0%	1,773	5.1%	1,223	6.8%	69.0%	158	10.0%	0	0.0%
Multiple Ethnicities	24,672	4.9%	1,494	4.3%	818	4.5%	54.8%	118	7.5%	119	7.5%
Subtotal, Students of Color	348,021	69.0%	23,813	67.9%	11,370	62.9%	47.7%	1,209	76.5%	1,181	74.7%
White	153,827	30.5%	11,181	31.9%	6,677	36.9%	59.7%	336	21.3%	379	24.0%
Other/ Not Stated	2,713	0.5%	76	0.2%	27	0.1%	35.5%	35	2.2%	20	1.3%
Total	504,561	100%	35,070	100%	18,074	100%	51.5%	1,580[4]	100%	1,580	100%

[1A] Source: California Department of Education Enrollment

[1B] Source: California Department of Education Graduates

[2] Based on federal reporting requirements.

[3] Definition - "If the CSU is asked to report only ONE summary race/ethnicity for you, please choose ONE category.", excludes 31 international enrollees.

[4] Excludes 38 International enrollees.



CALIFORNIA K-12 STUDENTS, HIGH SCHOOL GRADUATES, HIGH SCHOOL GRADUATES COMPLETING ALL A-G COURSES, AND RESIDENT FIRST-TIME FRESHMEN

	2015/16 CA K-12 Students [1]		2015/16 CA High School Graduates [1B]		2015/16 CA High School Graduates Completing all A-G Required Courses [1B]		Percentage of 2015/16 CA High School Graduates Completing all A-G Required Courses Within Each Diversity Category	Fall 2017 Resident SDSU First-Time Freshman Enrollees [2]		Fall 2017 Resident SDSU First-Time Freshman Enrollees - Diversity by Self-Identification [3]	
American Indian	34,704	0.6%	2,595	0.6%	812	0.4%	31.3%	22	0.5%	33	0.8%
African American	361,752	5.8%	25,897	6.0%	8,912	4.6%	34.4%	182	4.4%	230	5.6%
Hispanic	3,360,562	54.0%	217,397	50.6%	80,903	41.6%	37.2%	1320	32.1%	1,094	26.6%
Asian	551,229	8.9%	40,236	9.4%	29,158	15.0%	72.5%	332	8.1%	654	15.9%
Pacific Islander	30,436	0.5%	2,417	0.6%	934	0.5%	38.6%	11	0.3%	49	1.2%
Filipino	156,166	2.5%	13,908	3.2%	8,701	4.5%	62.6%	278	6.8%	0	0.0%
Multiple Ethnicities	192,146	3.1%	10,999	2.6%	5,539	2.8%	50.4%	342	8.3%	346	8.4%
Subtotal, Students of Color	4,686,995	75.3%	313,449	73.0%	134,959	69.3%	43.1%	2,487	60.4%	2,406	58.5%
White	1,500,932	24.1%	114,408	26.6%	59,157	30.4%	51.7%	1,475	35.8%	1,626	39.5%
Other/Not Stated	38,810	0.6%	1,466	0.3%	582	0.3%	39.7%	154	3.7%	84	2.0%
Total	6,226,737	100%	429,323	100%	194,698	100%	45.4%	4,116[4]	100%	4,116	100%

[1A] Source: California Department of Education Enrollment

[1B] Source: California Department of Education Graduates

[2] Based on federal reporting requirements.

[3] Definition - "If the CSU is asked to report only ONE summary race/ethnicity for you, please choose ONE category.", excludes 38 international.

[4] Excludes 34 International enrollees.



SAN DIEGO STATE
UNIVERSITY

THANK YOU