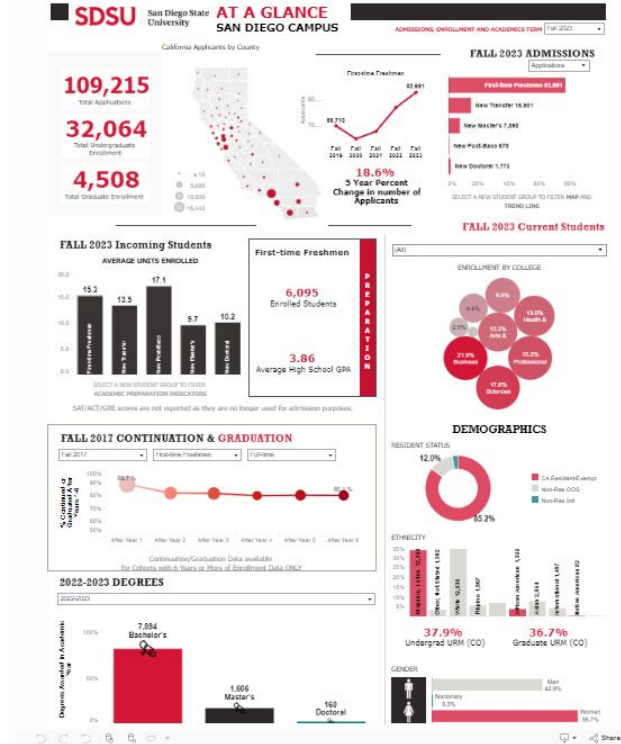


Data Profiles Data Tutorial



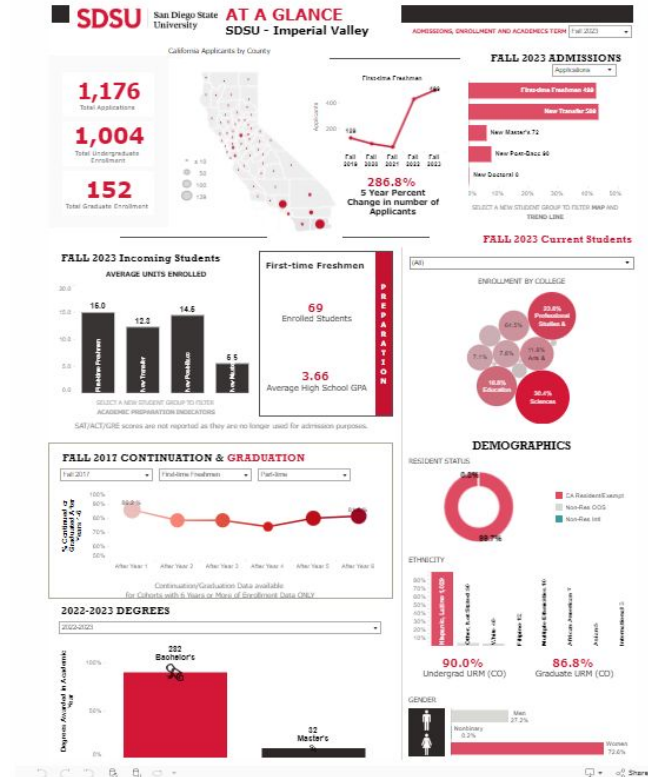
SDSU At A Glance - SD Campus

- The purpose of the [SDSU At A Glance - SD Campus](#) visualization is to better understand the overall trends in applications, admissions, enrollment, demographics, academic preparation, graduation, and degrees at SDSU San Diego Campus.
- Example: Use this data visualization if you want to communicate San Diego Campus student data profile patterns across multiple variables in a quick, high level visual representation



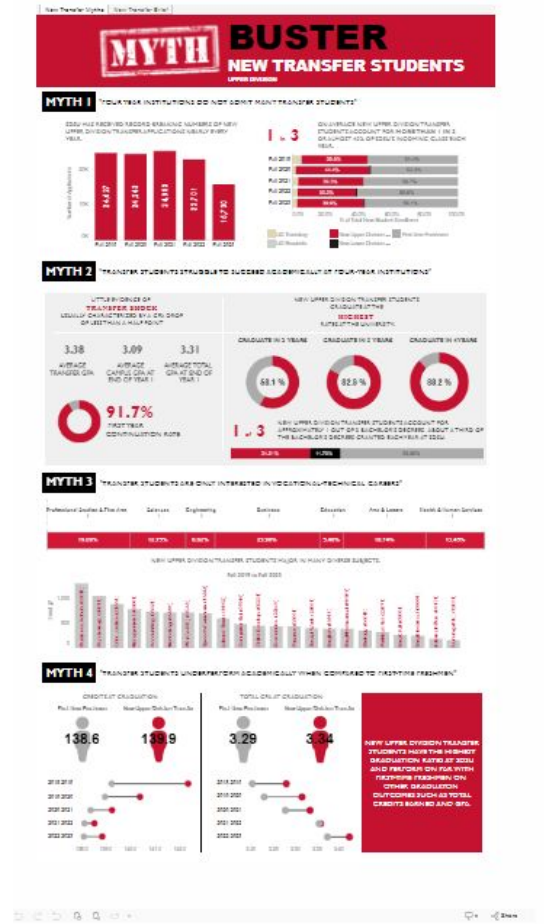
SDSU At A Glance - IV Campus

- The purpose of the [SDSU At A Glance - IV Campus](#) visualization is to better understand the overall trends in applications, admissions, enrollment, demographics, academic preparation, graduation, and degrees at SDSU Imperial Valley Campus.
- Example: Use this data visualization if you want to communicate Imperial Valley Campus student data profile patterns across multiple variables in a quick, high level visual representation



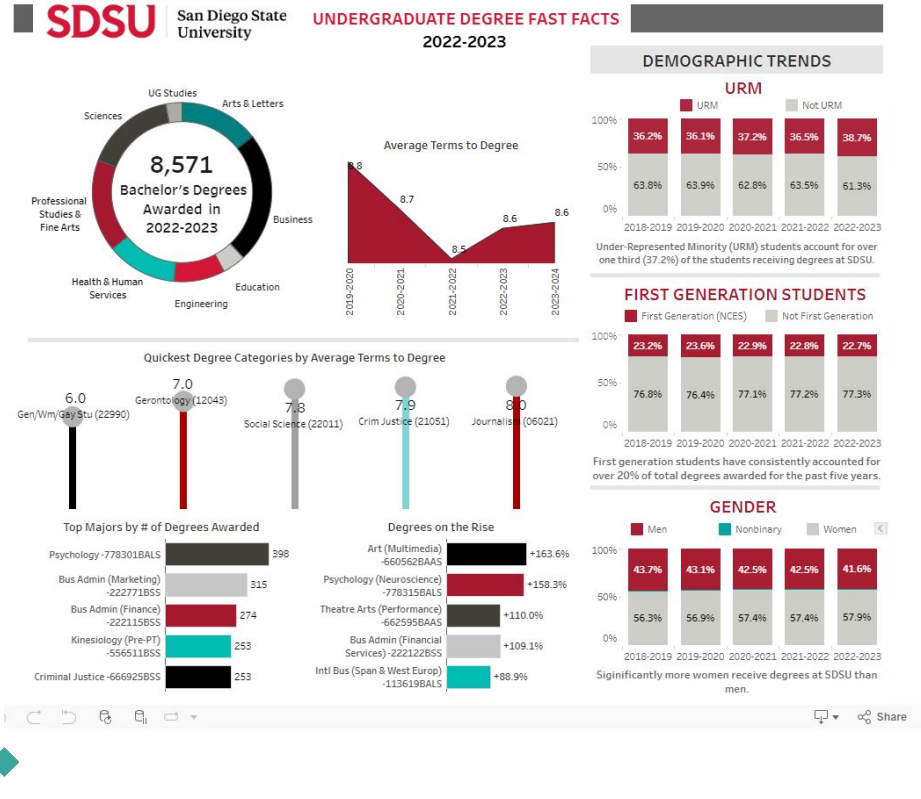
New Transfer Myths

- The purpose of the [New Transfer Myths](#) visualization is to debunk four common myths about new [transfer](#) students by displaying demographic and outcome information on [New Upper Division Transfer](#) students, followed by a brief that takes a closer look at transfer students.
- Example: Use this data visualization if you are looking for SDSU transfer student success data and information to assist in educating and informing interested stakeholders.



Hottest Degrees

- The purpose of the [Hottest Degrees](#) visualization is to better understand the **undergraduate degree fast facts** by [college](#), [average terms to degree](#), [URM](#), [First Generation](#) and [Gender](#).
- Example: Use this data visualization if you want to understand the undergraduate degree trends for different equity groups to develop equity plans within your college.



Veteran Student Profile

- The purpose of the [Veteran Student Profile](#) dashboard is to better understand the **trends of enrollment, ethnicity, continuation rates, graduation rates and average campus gpa** of SDSU students by [military affiliation status](#).
- Example: Use this dashboard if you want to understand the academic experience of military affiliated students versus non military affiliated students.

<
Military Affiliated Student Enrollment
Military Affiliated Student Ethnicity
Military Affiliated Student Continuation & Graduation Rates
Military Affiliated Student Average GPA at Census
>

San Diego State University Military Affiliated Student Profile

New Undergraduate Military Affiliated Student 1-Yr. Continuation Rate

	Fall 2017		Fall 2018		Fall 2019		Fall 2020		Fall 2021		Fall 2022	
	Enroll	% Cont After Yr 1	Enroll	% Cont After Yr 1	Enroll	% Cont After Yr 1	Enroll	% Cont After Yr 1	Enroll	% Cont After Yr 1	Enroll	% Cont After Yr 1
Military	164	86.4%	153	89.1%	249	90.0%	221	88.7%	166	86.1%	172	89.0%
Military Dependent	602	86.5%	613	86.7%	811	91.4%	941	89.8%	816	90.2%	958	90.6%
Not Military	7405	89.4%	7851	89.5%	7973	90.3%	7809	89.5%	7902	89.5%	8222	90.1%
Grand Total	8391	89.2%	8647	89.2%	9033	90.4%	8971	89.5%	8884	89.5%	10350	90.1%

Graduation Rate of New Full-time Upper-division Transfer Military Affiliated Students

	Fall 2017				Fall 2018				Fall 2019				Fall 2020				Fall 2021			
	Enroll	% Grad Y2	% Grad Y3	% Grad Y4	Enroll	% Grad Y2	% Grad Y3	% Grad Y4	Enroll	% Grad Y2	% Grad Y3	% Grad Y4	Enroll	% Grad Y2	% Grad Y3	% Grad Y4	Enroll	% Grad Y2	% Grad Y4	
Military	163	46.0%	69.3%	76.7%	160	54.4%	78.8%	81.9%	222	55.9%	77.5%	85.1%	180	49.4%	78.3%	83.9%	143	50.3%	72.0%	
Military Dependent	244	52.9%	82.8%	87.3%	225	61.3%	82.7%	86.7%	266	57.1%	80.8%	87.2%	346	59.2%	83.8%	89.6%	243	59.3%	81.5%	
Not Military	2353	56.7%	83.7%	88.7%	2450	60.4%	84.6%	89.5%	2087	61.0%	84.8%	88.2%	3120	55.4%	80.5%	85.2%	2692	59.5%	83.1%	
Grand Total	2760	55.7%	82.8%	87.9%	2835	60.1%	84.1%	88.8%	3375	60.3%	84.0%	87.9%	3646	55.5%	80.7%	85.5%	3278	59.1%	82.5%	

Graduation Rate of New Full-time & Part-time Upper-division Transfer Military Affiliated Students

	Fall 2017				Fall 2018				Fall 2019				Fall 2020				Fall 2021			
	Enroll	% Grad Y2	% Grad Y3	% Grad Y4	Enroll	% Grad Y2	% Grad Y3	% Grad Y4	Enroll	% Grad Y2	% Grad Y3	% Grad Y4	Enroll	% Grad Y2	% Grad Y3	% Grad Y4	Enroll	% Grad Y2	% Grad Y4	
Military	173	43.4%	66.5%	74.8%	174	50.6%	75.9%	79.3%	234	53.4%	74.6%	82.6%	207	45.4%	73.9%	79.7%	161	48.4%	69.6%	
Military Dependent	272	49.3%	79.0%	85.3%	248	58.1%	81.5%	85.8%	296	54.1%	79.4%	86.1%	377	55.7%	81.7%	87.5%	266	56.6%	79.3%	
Not Military	2623	52.9%	80.7%	86.6%	2722	56.5%	82.5%	86.0%	3262	57.1%	81.6%	86.2%	3498	51.3%	77.0%	82.6%	3196	55.7%	79.8%	
Grand Total	3066	52.1%	79.8%	85.8%	3144	56.3%	82.1%	87.4%	3792	56.6%	81.2%	86.0%	4082	51.4%	77.3%	82.9%	3623	55.4%	79.3%	



Migration by College

- The purpose of the [Migration by College](#) visualization is to **aid in the exploration of student movement between their colleges of enrollment**—from the time they start their studies at SDSU, to the time they graduate from the University.
- Example: Use this data visualization if you want to understand the movement of students into and out of your college after entry.

